



Luther Point

BIBLE CAMP

11525 Luther Point Rd
Grantsburg, WI 54840

715.689.2347 | www.lutherpoint.org | info@lutherpoint.org

Thank you for allowing Luther Point Bible Camp to be your wedding destination! The following pages will help you learn about Luther Point's facilities, amenities, procedures and provide some tools for your planning.

Our Facilities are stocked with a lot of the basic you will need: pots and pans, dishes, coffee maker and coffee, hot chocolate, hot apple cider etc. If you find you are missing anything please contact your retreat host and they will help you as much as they can.

Enclosed you will find:

- A copy of your statement and Luther Point Bible Camp's terms and conditions
 - Please either electronically sign or sign and mail the terms and conditions back to Luther Point
- Facilities Policies and Amenities
- Diagram of facilities
- Meal options
- List of businesses and restaurants around Luther Point Bible Camp
- Map of Luther Point Bible Camp
- Directions to Luther Point Bible Camp
- Wedding Amenities List

Please follow the link provided in your email or type the following link into your web browser and provide the information needed at least two weeks before your stay with us.

<https://form.jotform.com/220116086373147>

Meals included in your contract are: Friday Supper, Saturday Breakfast and Lunch and Sunday Brunch. Meal times can be coordinated with the Luther Point staff leading up to your stay.

Again, thank you for staying with us at Luther Point Bible Camp and we look forward to celebrating with you!

God's Peace,

Luther Point Bible Camp Staff

www.LutherPoint.org

Retreats: 715.602.3236

Office: 715.689.2347

LpRetreats@LutherPoint.org

Forming Faith, Pointing to Christ

TERMS AND CONDITIONS

COST

- Base fee of \$5,000 includes use of all of Luther Point Bible Camp's facilities as listed under "Luther Point Bible Camp Wedding Amenities" and four meals for 50 people. Additional meals can be purchased at \$35 per person.

NUMBER OF ATTENDEES EXPECTED

- The final number of attendees for your group must be communicated to the Luther Point office two weeks prior to your arrival.
- Final billing for meals will be assessed by either the number confirmed or the number attending; if the number attending is more than the number confirmed.

PAYMENT

- A \$1,000 non-refundable deposit is due within 2 weeks of booking.
- Remaining payment will be due upon arrival and check-in.

FINAL BILL

A copy of your final bill will be provided at the beginning of your retreat. Final payment is due the first day of your stay at Luther Point Bible Camp, if not already paid.

USE/DAMAGE/BREAKAGE

You will be held responsible for paying cost of the repair or replacement of any Luther Point Bible Camp property damaged, lost or broken by your group. If the damage incurred requires Luther Point Bible Camp to cancel or postpone upcoming events, retreats or camps the party who damaged the property will be responsible for any lost income.

Meals

- Luther Point Bible Camp will provide four meals: Friday supper, Saturday breakfast and lunch, Sunday brunch.
- Luther Point Bible Camp will not provide the reception dinner. If using a catering company and Luther Point's kitchen facility the catering company is responsible for a \$500 refundable cleaning deposit due to Luther Point Bible Camp prior to use of the facility.

INSURANCE

You are responsible for your own group or individual coverage.

I have read and understand the retreat policies, terms and conditions set forth in this contract (including attached policies, rules and procedures). By signing this contract I am agreeing with and will abide by all retreat policies, rules and procedures set forth in this contract.

Printed Name

Signature

Date





**Forming Faith,
Pointing to
Christ**

Retreat Polices and Information

Luther Point Bible Camp is an association of member congregations. We offer year-round outdoor ministries and retreats that provide safe, fun, Christ-centered experiences which lead to transformed and strengthened relationships with God, one another and creation. These experiences continue with guests long after they leave.

CHECK-IN & CHECKOUT

- ◇ Check-in will be between 3 and 8 pm; Checkout is 11am
- ◇ You are responsible to report any lost, damaged, or broken items. You will be charged for any property damage done.
- ◇ Leave the facilities as you found them.
- ◇ There will be a checkout list in the retreat space or cabin
- ◇ If you choose to remove any garbage from your space it must be placed into the containers by the shop (ask your host for directions) and not into any other container in camp. Please make note that there is a recycling and garbage.

SAFETY

- ◇ In case of emergency, contact the Retreat Host and/or call 911.
- ◇ Luther Point Bible Camp requires retreats with minors in attendance to maintain a 1 to 8 adult/youth ratio at all times
- ◇ Candles are not allowed to be burnt inside.
- ◇ Park vehicles in designated places. The retreat center turn around and the road to the family cabins are a fire lane, please do not block.

STAFF ASSISTANCE

- ◇ Our goal is to make you feel welcomed. We will greet you, provide directions, help you with facilities, equipment, and other needs.
- ◇ Programming is available by prior arrangement and at an additional cost.
- ◇ We will meet with your group leaders upon arrival to confirm meal times, numbers, and listen to your group needs. Shortly thereafter the staff will give a brief orientation to the entire group.

11525 Luther Point Rd.
Grantsburg, WI 54840
Office: 715.689.2347

Retreat Host:
715.602.3238

lpretreats@lutherpoint.org



Luther Point
BIBLE CAMP

**Forming Faith,
Pointing to
Christ**

11525 Luther Point Rd.
Grantsburg, WI 54840
Office: 715.689.2347

Retreat Host:
715.602.3238

lpretreats@lutherpoint.org

Retreat Polices and Information

BEHAVIOR

- ◇ Absolutely **NO FIREWORKS**
- ◇ **No Alcohol** at the waterfront
- ◇ Smoking is not allowed in any of the buildings. Cigarette butts must be disposed of properly. Additional clean-up charges may apply for cigarette butts not properly disposed of.
- ◇ Lower your voices by 10 p.m. and cease outside activities by 11:00 p.m. - voices carry extremely well over the water and in the dark.
- ◇ You will most likely be sharing some of the facilities (beachfront, boats, game room, mealtime, etc.) with other retreat groups. Respect other people and their property, along with the camp's staff, property, and equipment.
- ◇ Non compliance with any policy, disruptive behavior to residents and other guests, or staff direction will result in your removal from Luther Point Bible Camp. In this event no refunds will be issued.
- ◇ Please close all windows when using AC or heaters
- ◇ Campfires are in designated fire pits only.

AMENITIES

- ◇ No Firearms, fireworks, ATVs (this includes all cross-country motorized vehicles) or snowmobiles.
- ◇ Dogs are permitted in Family Cabins Only
- ◇ The bay (Akermark Bay) is aquatically sensitive. Observe the "NO WAKE" restriction in the bay and near the shores of the lake. Use common boating courtesies when meeting other boaters on the lake.
- ◇ There is to be no fish cleaning in the retreat centers, family cabins or on the beachfront. Use the fish shack to clean your fish and deposit waste in the bucket. The waste should be buried. Speak to the Retreat Host about where to bury them.
- ◇ Canoes will be available for no additional charge
- ◇ Guests are welcome to walk through Luther Point's Outpost area. The challenge course and low ropes can be arranged for use with your host for an additional fee.
- ◇ Use of the main camp during summer camp (June– early August) is restricted Sunday - Friday
- ◇ Use of the waterfront during summer camp (June—Early August) is restricted to Friday after 3:00 p.m. to Sunday at 3:00 p.m.

Luther Point Bible Camp Wedding Amenities

- Indoor and Outdoor Sound System
- Portable Benches for use in the Chapel or at the Waterfront (Seating for 100+)
- Round Tables and Chairs for Reception in the Dining Hall
- Rectangle Tables for guest book, etc.
- Ample Parking on the Playing Field
- Use of facilities including:
 - Retreat Center
 - Luther Lodge
 - 5 Family Cabins
 - Shalom (Multipurpose Room)
 - Gary Loktu Center (Dining Hall)
 - Dahlberg Memorial Chapel
 - Beautiful Waterfront
 - Swimming and Boat Docks (seasonal)
 - Game Room



Retreat Meal Option

Breakfast

Option 1

- Scrambled Eggs
- Bacon
- Hash Browns
- Fruit
- Yogurt
- Pastries
- Cereal Bar
- Milk/Juice

Option 2

- Pancakes
- Sausage
- Scrambled Eggs
- Fruit
- Yogurt
- Pastries
- Cereal Bar
- Milk/Juice

Option 3

- French Toast
- Sausage
- Scrambled Eggs
- Fruit
- Yogurt
- Pastries
- Cereal Bar

Lunch

Option 1

- Hamburgers
- French Fries
- Pasta Salad
- Fruit
- Salad Bar
- Lemonade

Option 2

- Pulled Pork
- Coleslaw
- Tater Tots
- Fruit
- Salad Bar
- Lemonade

Option 3

- Pizza
- Boneless Wings
- French Fries
- Fruit
- Salad Bar
- Lemonade

Supper

Option 1

- Honey Balsamic Chicken
- Mashed Potatoes
- Roasted Vegetables
- Dinner Roll
- Salad Bar
- Milk & Lemonade

Option 2

- Pork Loin
- Roasted Potatoes
- Honey Roasted Carrots
- Dinner Rolls
- Salad Bar
- Milk & Lemonade

Option 3

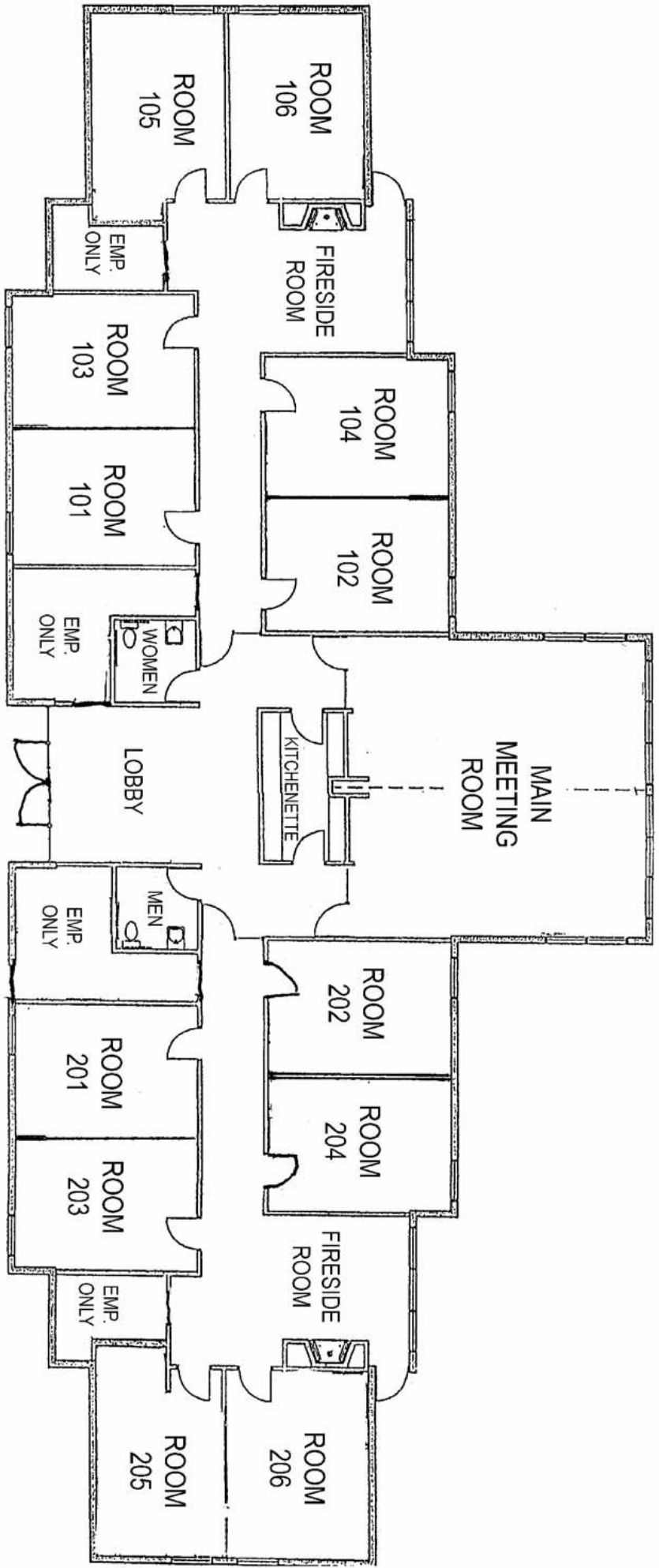
- Pasta
- Meat Balls
- Red and White Sauce
- French Bread
- Salad Bar
- Milk & Lemonade

Brunch

- Pancakes
- Scrambled Eggs
- Hash Browns
- Bacon
- Biscuits and Gravy
- Ham
- Cereal Bar
- Milk/Juice

Supper Dessert: Table Top S'mores

Luther Point reserved the right to change items out as needed due to supply availability. If items are substituted you will be notified as quickly as possible. Vegetarian and Gluten Free items are available upon request before the start of the meal.



LUTHER POINT RETREAT CENTER

Luther Lodge

Living Area—includes sofas, tables, chairs, fireplace, piano.

Kitchen Area—includes stove, refrigerator, dishwasher, microwave, coffee pot, dishes, pots/pans, dish towels/clothes, etc.

Sleeping Room #1—sleeps 6/7 people.

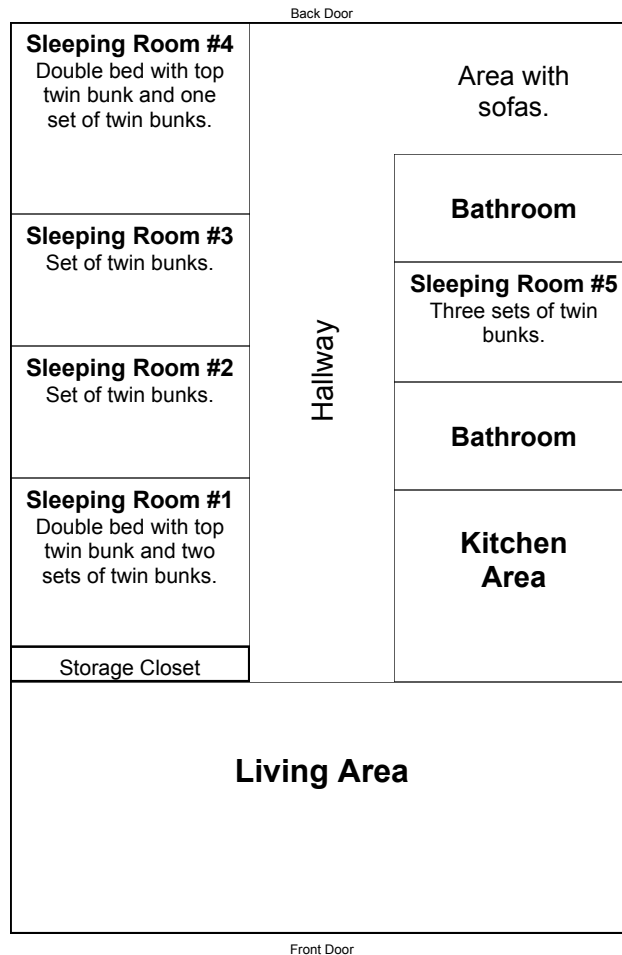
Sleeping Room #2—sleeps 2 people.

Sleeping Room #3—sleeps 2 people.

Sleeping Room #4—sleeps 4/5 people.

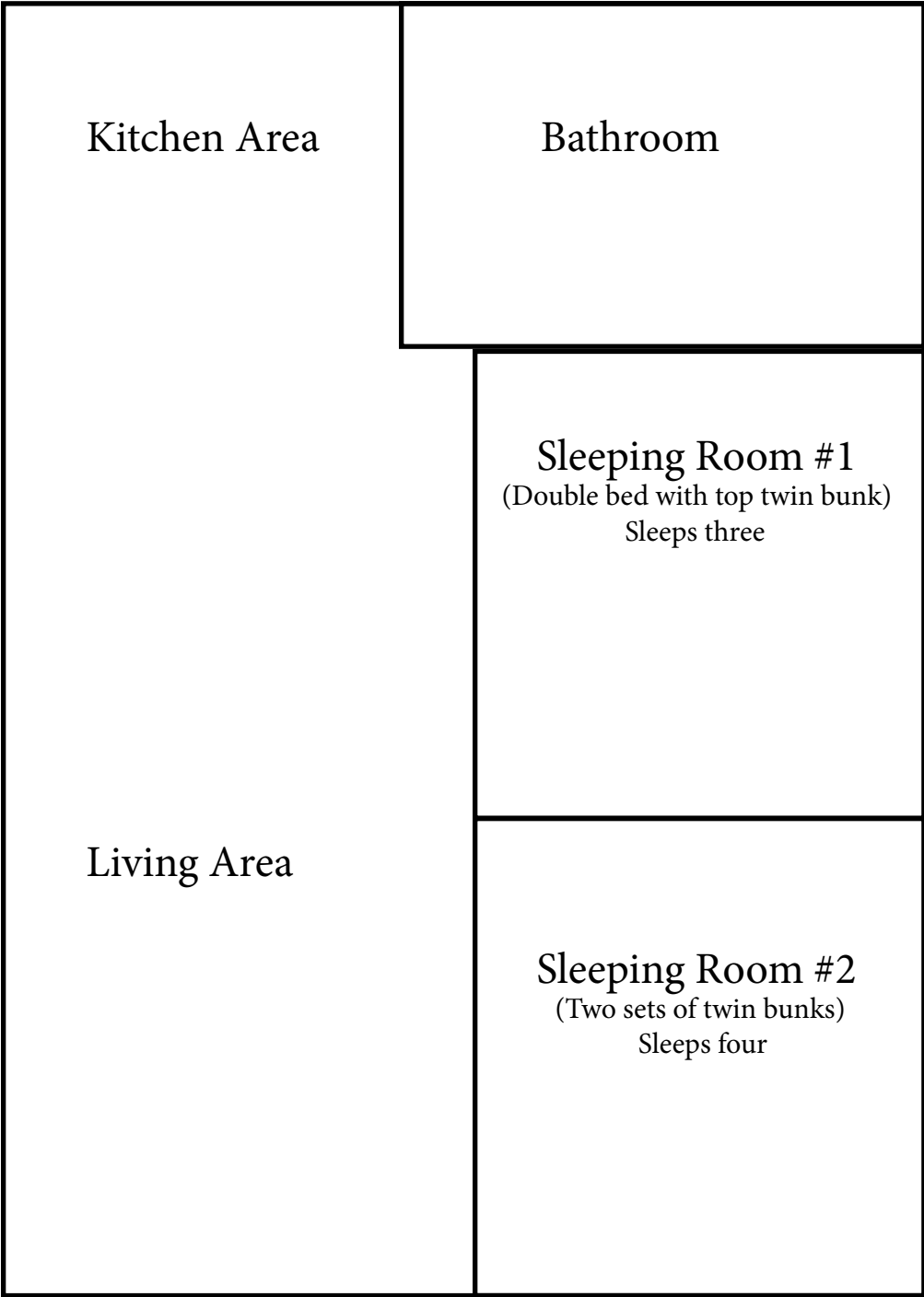
Sleeping Room #5—sleeps 6 people.

Bathrooms—includes showers, sinks, toilets.



Galilee Family Cabin

(7 sleeping spaces)



Kitchen Area

Bathroom

Sleeping Room #1
(Double bed with top twin bunk)
Sleeps three

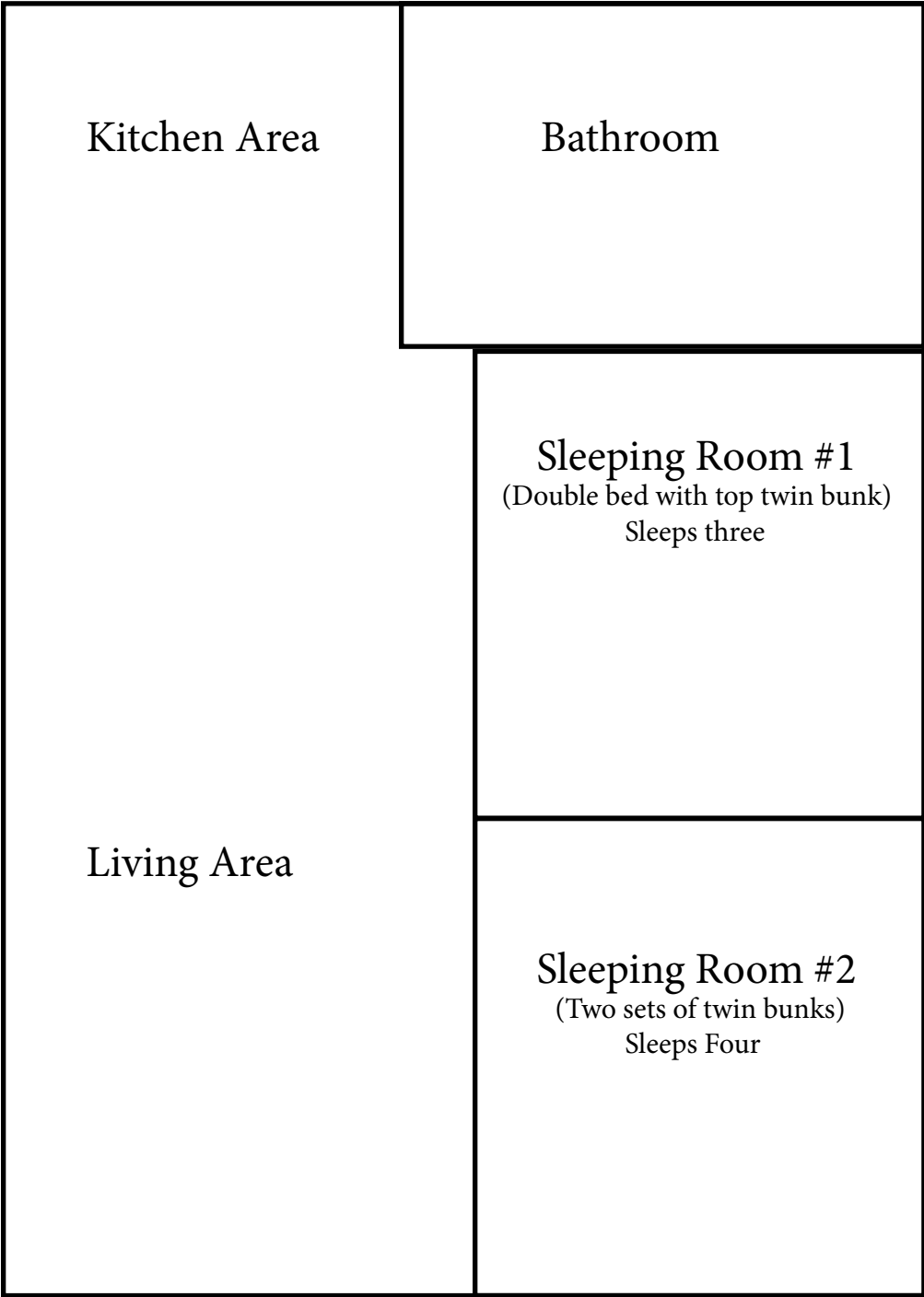
Living Area

Sleeping Room #2
(Two sets of twin bunks)
Sleeps four

Front Door

Jericho Family Cabin

(7 sleeping spaces)



Kitchen Area

Bathroom

Sleeping Room #1
(Double bed with top twin bunk)
Sleeps three

Living Area

Sleeping Room #2
(Two sets of twin bunks)
Sleeps Four

Front Door

Jerusalem Family Cabin
(7 sleeping spaces)

Front Door

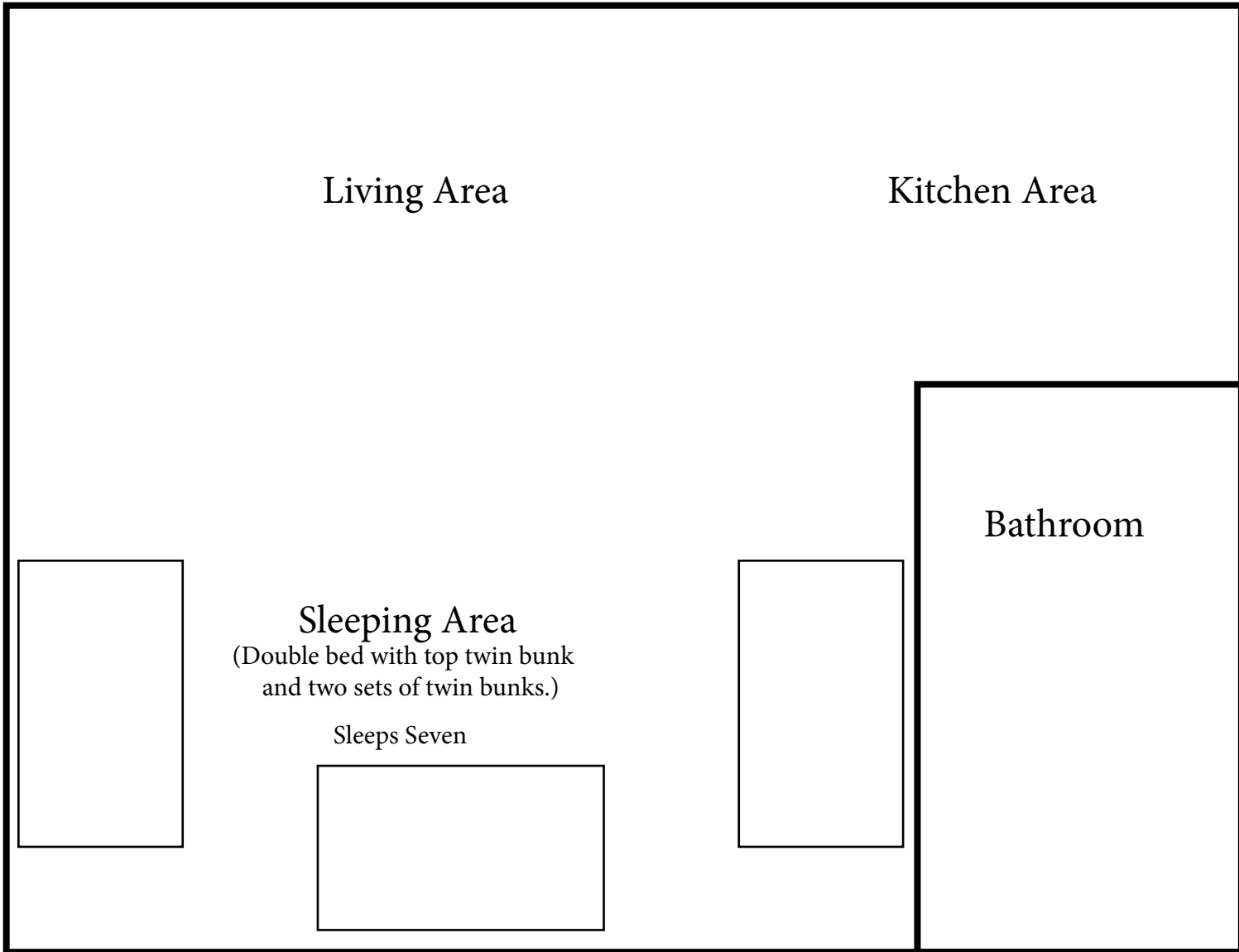
Living Area

Kitchen Area

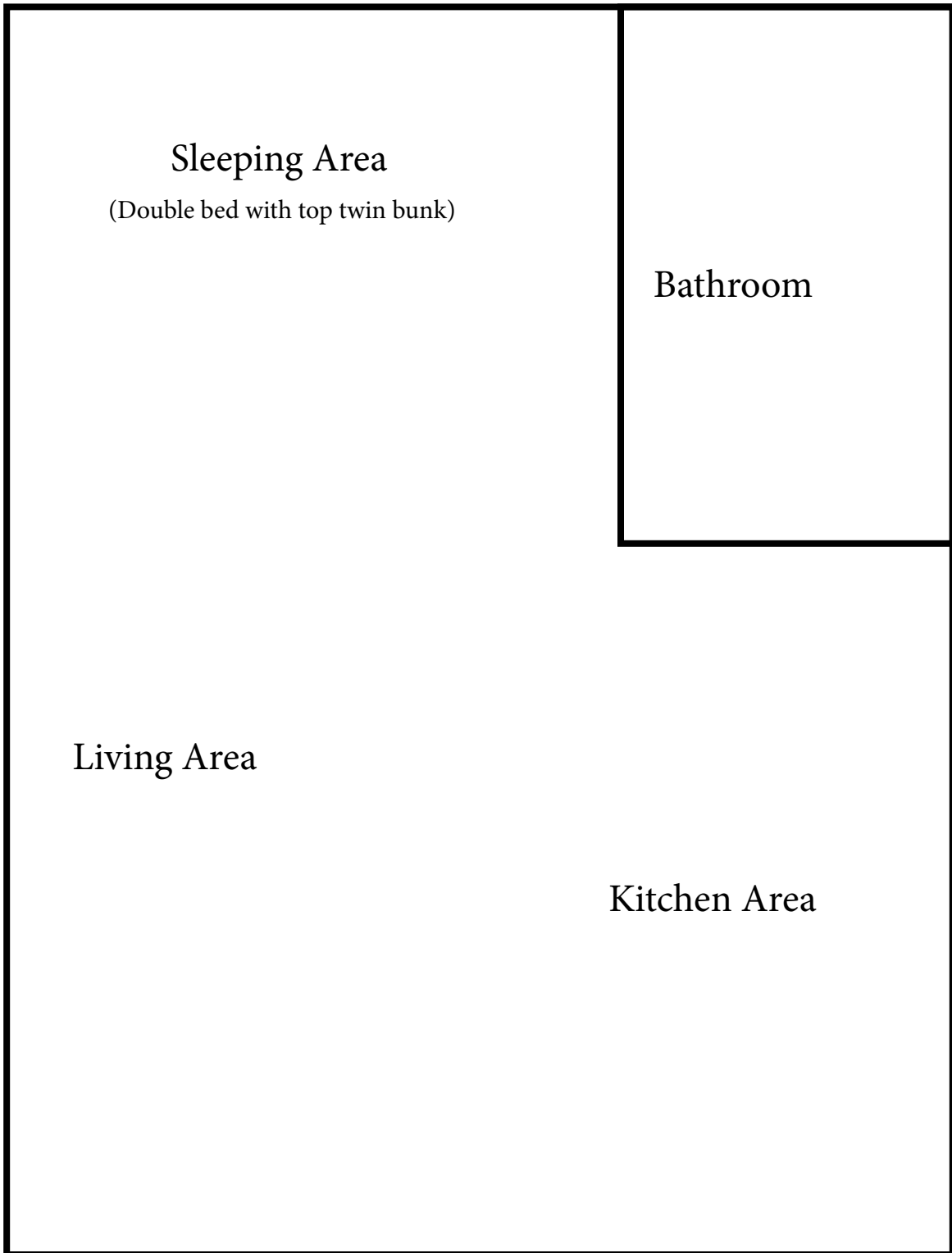
Bathroom

Sleeping Area
(Double bed with top twin bunk
and two sets of twin bunks.)

Sleeps Seven



Nazareth Family Cabin
(3 sleeping spaces)



Sleeping Area
(Double bed with top twin bunk)

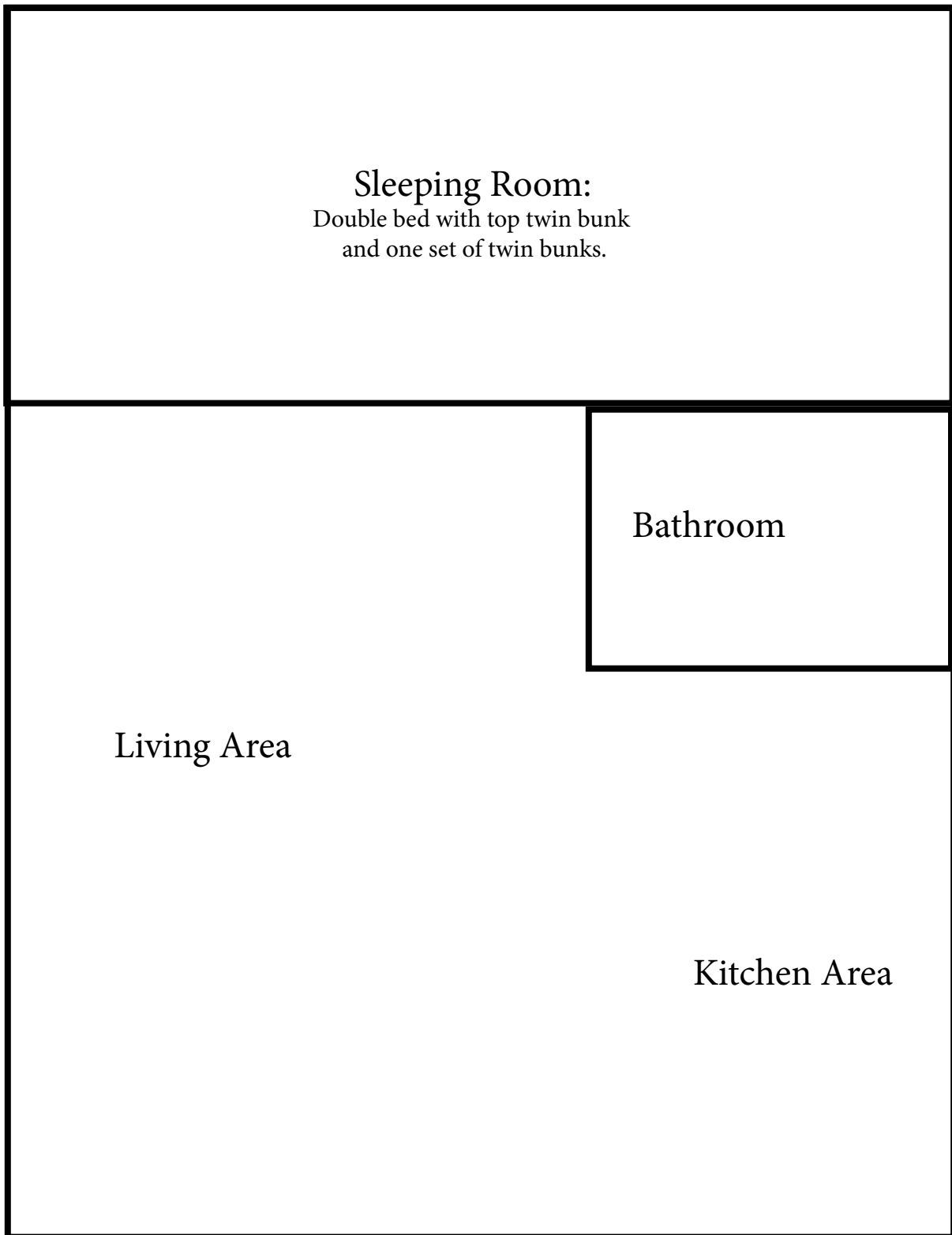
Bathroom

Living Area

Kitchen Area

Front Door

Zion Family Cabin
(5 sleeping spaces)



Sleeping Room:
Double bed with top twin bunk
and one set of twin bunks.

Bathroom

Living Area

Kitchen Area

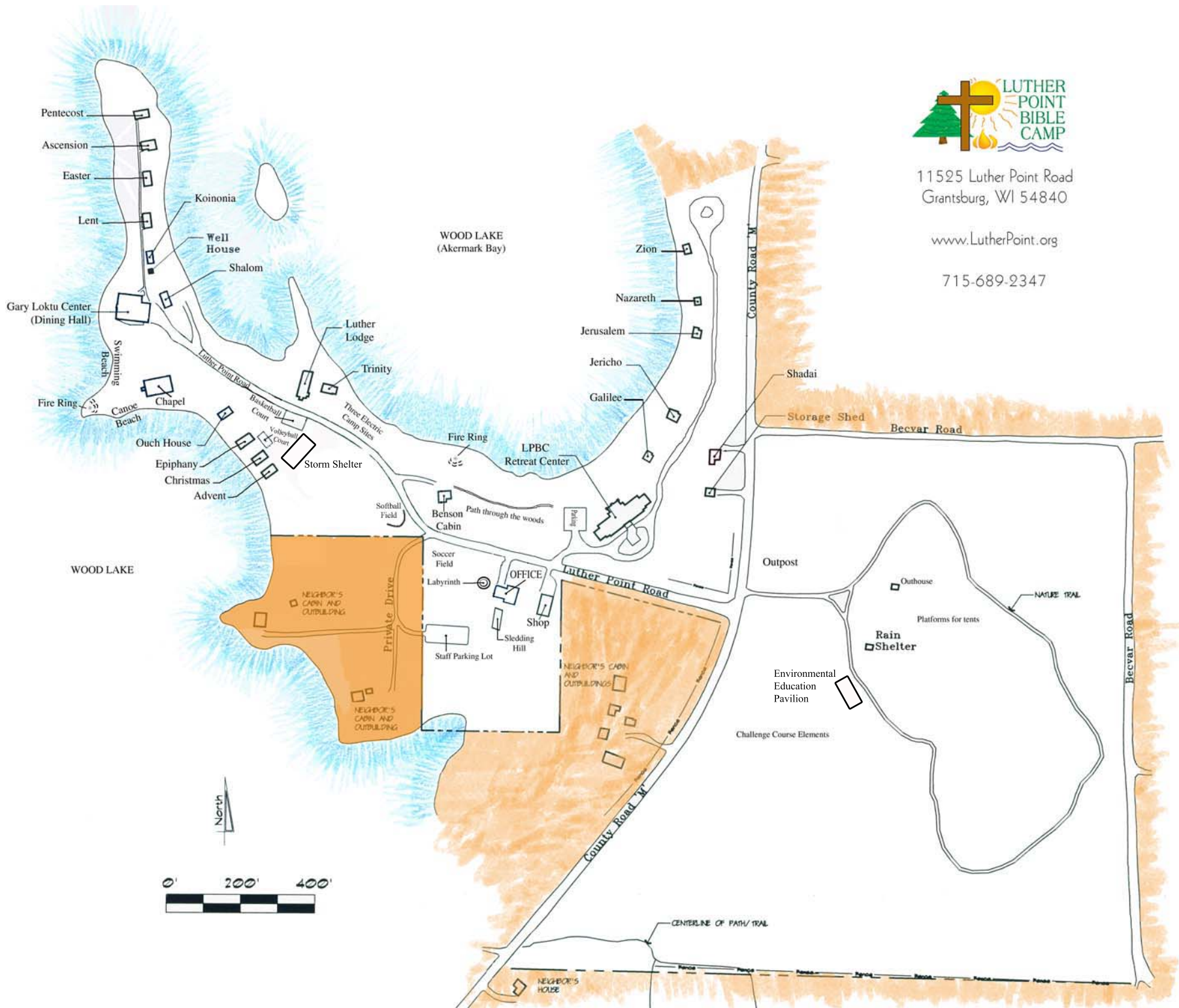
Front Door



11525 Luther Point Road
Grantsburg, WI 54840

www.LutherPoint.org

715-689-2347



Business and Attractions Close to Luther Point Bible Camp

Grocery/Convenience

- KJ's Fresh Market, 603 WI-70, Grantsburg, WI 54840
- Four Winds Market, 7389 Airport Rd, Siren, WI 54872
- Burnett Dairy Co-Op (limited selection) 11631 WI-70, Grantsburg, WI 54840
- Block and Cleaver Artisan Meats, 7991 1st St. Siren, WI 54872

Restaurant/Coffee

- Chattering Squirrel Coffee, 7711 Park Rd, Siren WI 54872
- Drive-In (Seasonal) 133 WI-70, Grantsburg, WI 54840
- The Foxhole – American Legion Post 185, 108 N. Oak St. Grantsburg, WI 54840
- Country Café on Main – 125 W Madison Ave. Grantsburg, WI 54840
- T-Dawgs Bar and Grill – 429 WI-70, Grantsburg, WI 54840
- Burnett Dairy Co-Op, 11631 WI-70, Grantsburg, WI 54840
- Brickfield Brewing, 130 W Olson Dr. Grantsburg, WI 54840
- Ascend Coffee, 131 W Madison Ave, Grantsburg, WI 54840
- Adventures Restaurant and Pub, 7710 Park Rd. W, Siren, WI 54872
- Pour House 24136 WI-35, Siren, WI 5487

Attractions

- Crex Meadows Wildlife Education and Visitor Center, 102 E Crex Ave. Grantsburg, WI 54840
- Tjader Acres Disc Golf, WI-70 Trunk, Siren, WI 54872 (will be on the right close to the golf course)
- Gandy Dancer Southern Section, 137 Traffic Ave. N Frederic, WI 54837
- Timber theaters, 24226 1st Ave. Siren, WI 54872

Golf

- Grantsburg Golf Course, 333 W. St. George Ave. Grantsburg, WI 54840
- Frederic Golf Course, 905 A Wisconsin Ave. Frederic, WI 54837
- Siren National Golf Club, 8606 Waldora Rd. Siren, WI 54872

Driving Directions to Luther Point Bible Camp

**11525 Luther Point Road
Grantsburg, WI 54840**

Coming North from the Twin Cities: Go north on Interstate 35 until you get to the Grantsburg/Rock Creek/Highway 70 exit. Go East (right) on Highway 70 until you get to County Road M (past Grantsburg, past a little tiny town called Alpha). Turn South (right) on County Road M. Go about 3.1 miles and you will see the Luther Point sign. Turn West (right) onto Luther Point Road. You are at camp!

Coming North from Wisconsin: Go north on Highway 87 until you get to County Road O. Turn East (right) on County Road O. It joins to Highway 48. Keep going straight on East Highway 48 until you come to County Road M. Turn North (left) on County Road M. After about 3.9 miles you will see the Luther Point sign. Turn West (left) onto Luther Point Road. You are at camp!

Coming South from Duluth: Go south on Interstate 35 until you get to the Grantsburg/Rock Creek/Highway 70 exit. Go East (right) on Highway 70 until you get to County Road M (past Grantsburg, past a little tiny town called Alpha). Turn South (right) on County Road M. Go about 3.1 miles and you will see the Luther Point sign. Turn West (right) onto Luther Point Road. You are at camp!

Coming South from Superior: Go south on Wisconsin 35 until you get to stoplight in Siren. Turn West (right) onto Highway 70. Continue on Highway 70 until you get to County Road M (past a little tiny town called Falun). Turn South (left) on County Road M. Go about 3.1 miles and you will see the Luther Point sign. Turn West (right) onto Luther Point Road. You are at camp!

Coming from the East: Go West on Highway 48 (past Frederic) until you come to County Road M just past the Trade River Store. Turn North (right) on County Road M. After about 3.9 miles you will see the Luther Point sign. Turn West (left) onto Luther Point Road. You are at camp!

Coming from the West: Go East on Highway 70 until you get to County Road M (past Grantsburg, past a little tiny town called Alpha). Turn South (right) on County Road M. Go about 3.1 miles and you will see the Luther Point sign. Turn West (right) onto Luther Point Road. You are at camp!